

Motive Battery

Energy Storage Battery

Reserve Battery

Motorcycle Battery



Maintenance Free-High Rate UPS Battery-TNX Series

TNX12-650W

(12V 650W, 15min@1.67Vpc)

(12V 210Ah, C10 @1.80Vpc)

GENERAL FEATURES

- ♦ Oxygen recombination technology: maintenance-free, no need to add water or acid during application
- ♦ Optimized plate design to increase power output at 15min backup time, high performance in high-rate discharge
- ♦ Wide operating temperature range from -20°C to 55°C, excellent deep discharge recovery capability
- ♦ New structure for plate grid, good corrosion resistance and greatly reduced resistance of the battery,
- ♦ 12 years design life @25°C, low self-discharge rate



Application

- ♦ UPS (High Rate)
- ♦ Communication Equipments
- ♦ Security systems
- ♦ Data & Network centers
- ♦ Emergency power supply (EPS)
- ♦ Bank and financial system
- ♦ Hospitals & Testing laboratories

Dimension

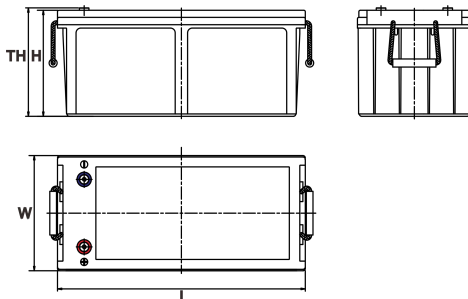
Unit:mm

Length 520±2mm / 20.47inch

Width 239±2mm / 9.41inch

Container Height 220±3mm / 8.66inch

Total Height 225±3mm / 8.86inch



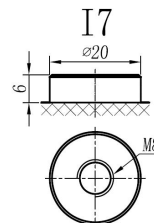
Terminal

Unit:mm

Terminal Type: I7

Weight

64.2kg 141.94lbs



This document is subject to change without prior notification

Motive Battery Energy Storage Battery Reserve Battery Motorcycle Battery

TNX12-650W

Specificaion

Nominal Voltage	12V	
Rated Power (15min Rate 25°C)	650W F.V (1.67V/cell)	
Rated Capacity (10HR 25°C)	210Ah (1.80V/cell)	
Dimension	Length	520±2mm / 20.47inch
	Width	239±2mm / 9.41inch
	Container Height	220±3mm / 8.66inch
	Total Height	225±3mm / 8.86inch
Weight	64.2kg / 141.94lbs	
Terminal	I7	
Container Material	ABS (Flame-retardant ABS UL94-V0 is optional)	
Operating Temperature Range	Discharge	-20 ~ +50°C
	Charge	0 ~ +40°C
	Storage	-15 ~ +40°C
Capacity Effected by Temperature	40°C / 104°F	106%
	25°C / 77°F	100%
	0°C / 32°F	86%
	-10°C / 14°F	65%
Charge	Float Voltage	2.25 -2.27V/cell@25°C, Tem.Coefficient : -3mV/cell/°C
	Equalize Voltage	2.40 -2.50V/cell@25°C, Tem.Coefficient : -3mV/cell/°C
	Cycle Voltage	2.40 -2.50V/cell@25°C, Tem.Coefficient : -5mV/cell°C
Max. Charging Current	63A (0.3C)	
Max. Discharge Current (5S)	1800A	
Internal Resistance	2.9mΩ	
Self-Discharge	<3%, TNX series stored at 25 °C require a supplementary charge every six months, the charging interval would shrink when the ambient temperature went higher	

Discharge Performance

Constant Current Discharge Table (25°C/77°F) Unit: A														
F.V/Time	10min	15min	20min	30min	45min	1h	2h	3h	4h	5h	6h	8h	10h	20h
1.85V/cell	334.3	288.6	188.8	143.6	118.3	82.32	68.63	50.11	39.62	33.13	29.43	24.59	20.370	10.491
1.80V/cell	365.5	308.5	198.3	148.9	125.6	88.49	73.16	53.20	41.78	34.99	30.97	25.73	20.981	10.898
1.75V/cell	390.4	326.5	206.2	154.2	128.9	91.58	75.01	54.33	43.01	35.91	31.59	26.03	21.287	11.000
1.70V/cell	425.4	348.6	212.9	159.4	133.1	93.64	76.35	55.67	43.94	36.53	32.21	26.24	21.592	11.102
1.67V/cell	456.5	373.7	218.7	162.5	137.2	95.70	77.90	56.29	44.76	37.15	32.62	26.55	21.796	11.204
1.60V/cell	477.8	389.1	224.5	166.6	141.4	97.76	79.23	57.52	45.58	37.66	33.03	26.75	21.898	11.305

Constant Power Discharge Table (25°C/77°F) Unit: W														
F.V/Time	10min	15min	20min	30min	45min	1h	2h	3h	4h	5h	6h	8h	10h	20h
1.85V/cell	574.1	516.4	335.4	256.8	212.6	148.84	125.00	91.56	72.63	60.95	54.26	45.50	38.151	19.688
1.80V/cell	623.0	548.8	350.8	264.8	224.7	155.90	132.92	96.93	76.30	64.24	56.99	47.48	39.187	20.347
1.75V/cell	660.5	577.2	363.3	273.4	230.0	160.14	135.84	98.72	78.37	65.56	57.93	47.85	39.470	20.441
1.70V/cell	713.8	612.3	373.5	281.8	236.7	164.85	137.81	100.79	79.88	66.60	58.78	48.04	39.941	20.536
1.67V/cell	758.8	650.4	381.5	285.9	243.1	169.56	140.17	101.74	81.11	67.64	59.53	48.42	40.223	20.724
1.60V/cell	785.8	671.6	388.7	291.4	249.3	174.27	141.96	103.43	82.33	68.30	60.10	48.80	40.506	20.818

动力电池

储能电池

备用电池

摩托车电池



阀控免维护-高功率UPS电池-TNX系列

TNX12-650W

(12V 650W, 15min@1.67Vpc)

(12V 210Ah, C10 @1.80Vpc)

产品特点：

- ◆ 氧复合技术: 阀控式免维护, 使用期间无需加水或加酸
- ◆ 极板优化处理, 提升15分钟放电性能, 高倍率放电性能优异
- ◆ 在-20°C到55°C温度区间内均可正常使用, 深放电恢复能力出色
- ◆ 隔板特色设计, 抗腐蚀性能佳, 同时大幅度降低电池内阻
- ◆ 12年设计寿命(25°C), 自放电率低



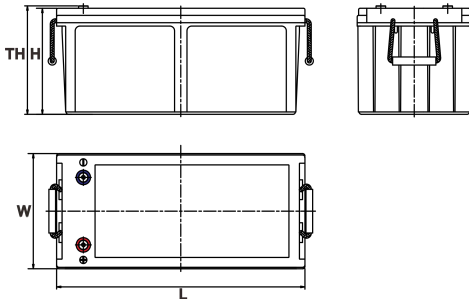
产品应用

- ◆ 不间断电源(高功率)
- ◆ 通讯设备
- ◆ 安全系统
- ◆ 数据网络中心
- ◆ 应急电源系统
- ◆ 银行资金系统
- ◆ 医疗测试设备

尺寸

单个尺寸

长	520±2mm / 20.47inch
宽	239±2mm / 9.41inch
高	220±3mm / 8.66inch
总高	225±3mm / 8.86inch



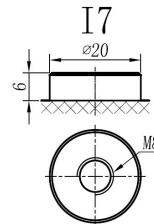
端子类型

单位:mm

端子类型 I7

重量

64.2kg 141.94lbs



ISO9001 ISO14001 OHSAS18001

内容如有改动, 恕不另行通知

动力电池

储能电池

备用电池

摩托车电池



TNX12-650W

规格书

额定电压	12V	
15分钟放电功率	650W F.V (1.67V/cell)	
额定容量 (10小时)	210Ah (1.80V/cell)	
尺寸	长	520±2mm
	宽	239±2mm
	高	220±3mm
	总高	225±3mm
重量	64.2kg	
端子	I7	
壳体材料	ABS (阻燃ABS壳体可选)	
使用温度范围	放电	-20 ~ +50°C
	充电	0 ~ +40°C
	储存	-15 ~ +40°C
不同温度下 电池容量系数	40°C / 104°F	106%
	25°C / 77°F	100%
	0°C / 32°F	86%
	-10°C / 14°F	65%
充电	浮充电压	2.25 - 2.27V/单格@25°C, 温度补偿系数: -3mV/单格/°C
	均充电压	2.40 - 2.50V/单格@25°C, 温度补偿系数: -3mV/单格/°C
	循环使用电压	2.40 - 2.50V/单格@25°C, 温度补偿系数: -5mV/单格/°C
最大充电电流	63A (0.3C)	
最大放电电流 (5S)	1800A	
电阻	2.9mΩ	
自放电	<3%, TNX系列储存在25°C时需每6个月进行一次补充充电, 环境温度更高时则充电间隔时间越短	

放电性能

恒电流放电表 (25°C/77°F) 单位: A														
F.V/Time	10min	15min	20min	30min	45min	1h	2h	3h	4h	5h	6h	8h	10h	20h
1.85V/cell	334.3	288.6	188.8	143.6	118.3	82.32	68.63	50.11	39.62	33.13	29.43	24.59	20.370	10.491
1.80V/cell	365.5	308.5	198.3	148.9	125.6	88.49	73.16	53.20	41.78	34.99	30.97	25.73	20.981	10.898
1.75V/cell	390.4	326.5	206.2	154.2	128.9	91.58	75.01	54.33	43.01	35.91	31.59	26.03	21.287	11.000
1.70V/cell	425.4	348.6	212.9	159.4	133.1	93.64	76.35	55.67	43.94	36.53	32.21	26.24	21.592	11.102
1.67V/cell	456.5	373.7	218.7	162.5	137.2	95.70	77.90	56.29	44.76	37.15	32.62	26.55	21.796	11.204
1.60V/cell	477.8	389.1	224.5	166.6	141.4	97.76	79.23	57.52	45.58	37.66	33.03	26.75	21.898	11.305

恒功率放电表 (25°C/77°F) 单位: W														
F.V/Time	10min	15min	20min	30min	45min	1h	2h	3h	4h	5h	6h	8h	10h	20h
1.85V/cell	574.1	516.4	335.4	256.8	212.6	148.84	125.00	91.56	72.63	60.95	54.26	45.50	38.151	19.688
1.80V/cell	623.0	548.8	350.8	264.8	224.7	155.90	132.92	96.93	76.30	64.24	56.99	47.48	39.187	20.347
1.75V/cell	660.5	577.2	363.3	273.4	230.0	160.14	135.84	98.72	78.37	65.56	57.93	47.85	39.470	20.441
1.70V/cell	713.8	612.3	373.5	281.8	236.7	164.85	137.81	100.79	79.88	66.60	58.78	48.04	39.941	20.536
1.67V/cell	758.8	650.4	381.5	285.9	243.1	169.56	140.17	101.74	81.11	67.64	59.53	48.42	40.223	20.724
1.60V/cell	785.8	671.6	388.7	291.4	249.3	174.27	141.96	103.43	82.33	68.30	60.10	48.80	40.506	20.818